



OAKFIELD



St. Leonards Road, Eastbourne, BN21 3UU

£1,275 Per Calendar Month



## St. Leonards Road, Eastbourne, BN21 3UU

\*ZERO DEPOSIT OPTION AVAILABLE\*

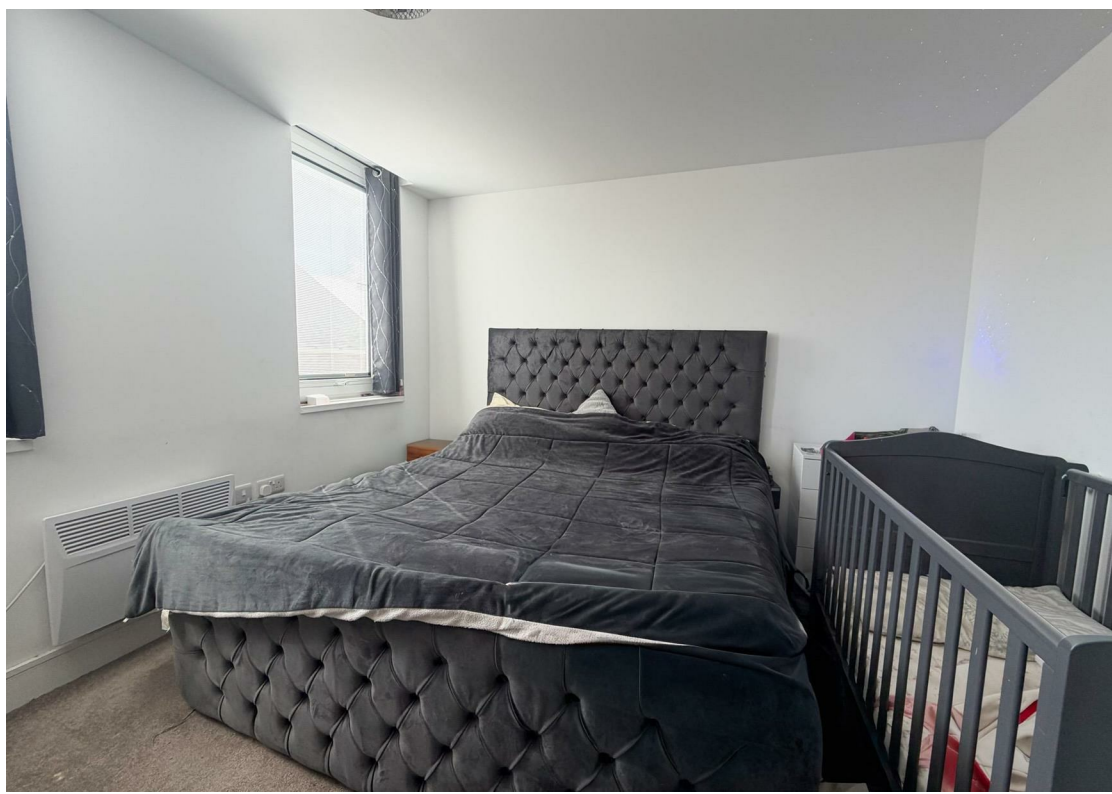
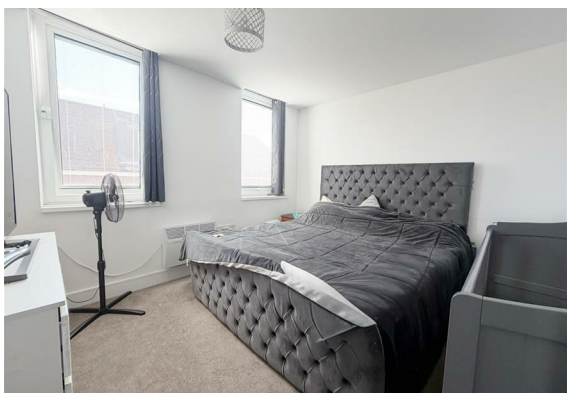
Ansvar House is a collection of 20 stylish apartments, designed for contemporary living in the centre of Eastbourne. If you are looking for the perfect place to call home, these apartments offer a unique blend of modern design, convenience, and comfort.

This two bedroom third floor flat offers two good size double bedrooms, an open plan living space with modern bathroom and kitchen with built in appliances.

Other benefits include modern electric heating, an entry intercom system, a lift to all floors and allocated parking for 1 vehicle. This is a pet friendly development we welcome applicants who have pets.

The apartments are located just a 5 minute walk from the centre of Eastbourne allowing you to enjoy easy access to shops, restaurants, parks, and excellent transport links, making commuting and leisure effortless.

Please note:  
Annual Income Threshold: £38,200





### Living Room

13'1" x 19'8" (4 x 6)

### Bedroom One

10'9" x 11'1" (3.3 x 3.4)

### Bedroom Two

13'9" x 9'6" (4.2 x 2.9)

### Bathroom

6'6" x 7'6" (2 x 2.3)



**Council Tax Band C - £2,359.37 per annum**



## Floor Plan



## Viewing

Please contact us on 01323 405553 if you wish to arrange a viewing appointment for this property or require further information.

These particulars, whilst believed to be accurate are set out as a general outline only for guidance and do not constitute any part of an offer or contract. Intending purchasers should not rely on them as statements of representation of fact, but must satisfy themselves by inspection or otherwise as to their accuracy. No person in this firm's employment has the authority to make or give any representation or warranty in respect of the property.

## Area Map



## Energy Efficiency Graph

